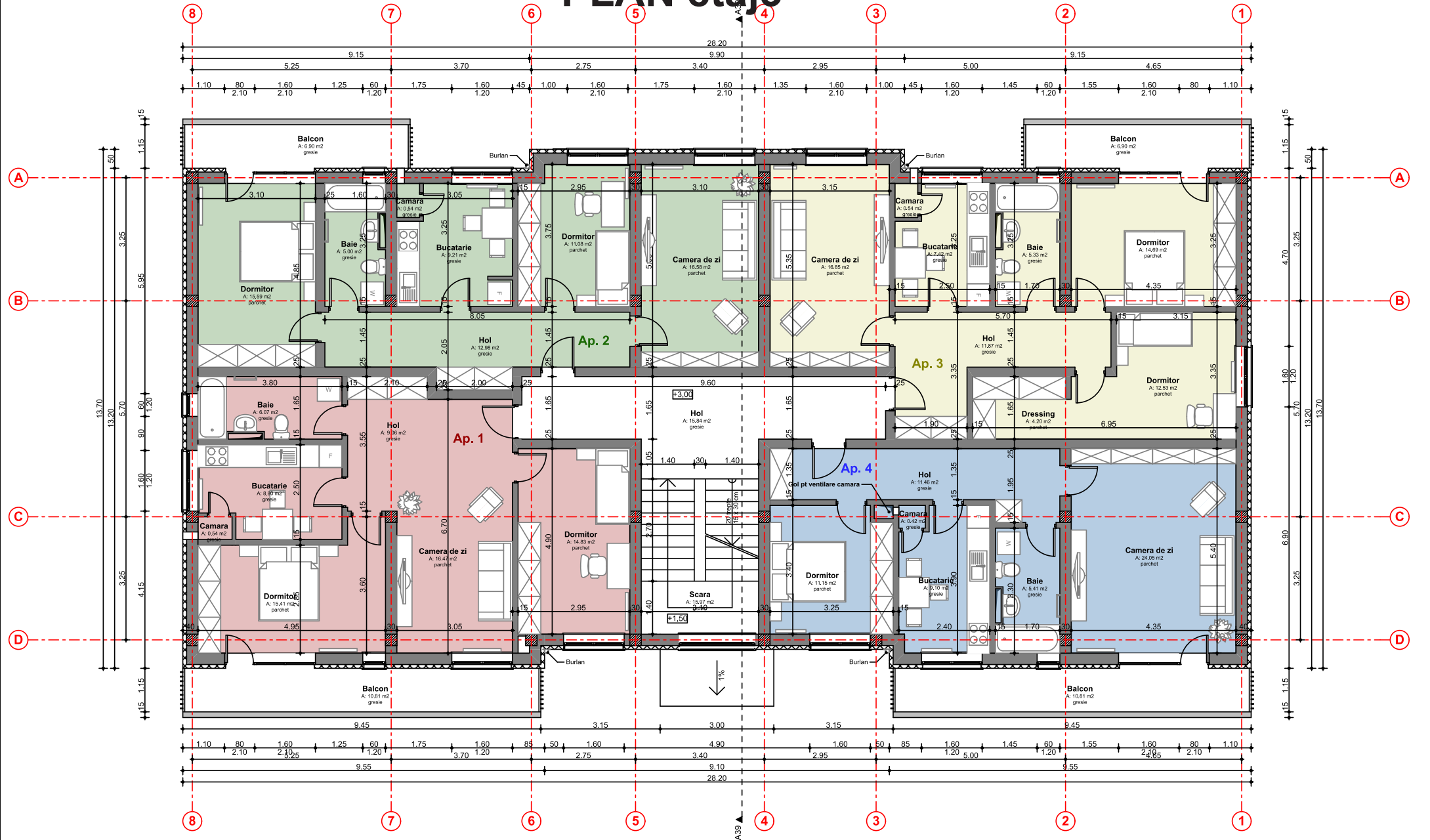


PLAN etaj3



Ap. 1 --- S utila = 71.18 mp (+balcon 10.81 mp)

Ap. 2 --- S utila = 70.98 mp (+balcon 6.90 mp)

Ap. 3 --- S utila = 73.43 mp (+balcon 6.90 mp)

Ap. 4 --- S utila = 61.59 mp (+balcon 10.81 mp)